

# Whitwell Primary School

Southfield Lane, Whitwell, nr Worksop. Notts S80 4NR

Tel. 01909 720251  
Fax: 01909 720251  
Email: info@whitwell.derbyshire.sch.uk



Head Teacher: Mrs S Tomlinson  
Deputy Head Teacher: Mr T Stirling

Monday 6<sup>th</sup> November

Dear Parents/Carers,

Welcome back to the start of our new term! We have so much to look forward to in the next few weeks as we build up to Christmas. We will be promoting Anti-Bullying Week – ‘Make a Noise About Bullying’ and this will include the NSPCC assemblies. There will be individual school photographs, Odd Sock day and BBC Children in Need, where we invite the children to dress in spotty clothes and to contribute £1 to the charity.



As we start the new term, very quickly it will be much darker by home time. Please consider collecting your child from school if they normally walk home alone in the evening. Also please make sure your child has named wellies, a coat and a hat in school so they are warm and dry.

## Christmas



We also intend to hold a Christmas Fair again; there will be the annual book fair – where school receives a % back from all the sales to buy new books for school and the Christmas Productions for EYFS and KS1. We will hold a coffee morning with a Christmas raffle and lots of events for the children. We will promote Save The Children Christmas Jumper day and then children may wear their jumpers for Christmas dinner and from then until the end of term. Please look out for more information to come!

## Parking

We are thrilled to have received some brand new signs regarding parking from Bolsover Safer Network Team. All of our stakeholders want to keep our children as safe as possible, particularly on Southfield Lane. Please do not park on the pavement, or block access to resident driveways. And please be vigilant of people walking with pushchairs and children on scooters.

## Teaching and Learning

The children are now well settled in their classes and new learning is priority. The staff have updated their webpages with all the information about what is going to be taught this term.

We are really grateful for the large amount of you, who were able to attend parent consultations in October and find out more about how your child is doing in school. This support really does make a difference.

We were also pleased to welcome several families to the Power Maths morning, giving you a chance to see a maths lesson in action. The feedback from this has been really good.

This term the children are likely to be involved in lessons which use additional resources. Therefore, we are asking if you would be able to contribute a donation towards the cost of materials used for cooking or for construction in DT. Even a small donation of £2 per child will mean that more materials can be readily available for all. If you feel you are able to contribute anything, please send the money into school in an envelope marked ‘resources’.

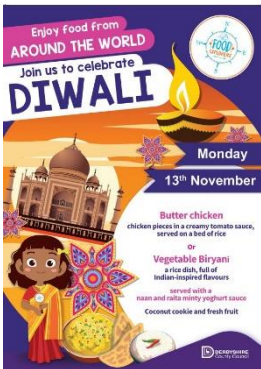


Believe, Endeavour, Succeed Together!



## School Dinners

Due to the cost increase in meals from September we know that some children in KS2 (Juniors) are now not having a school meal. This impacts on the hours the kitchen staff work and the fact that some children do not now have a hot meal.



Derbyshire have produced a lovely new menu for this term, including many 'favourites'. They have also planned some theme days, so please check the weekly menus.

Your child does not have to have a dinner all week, they can choose which days they would like one. And if they would prefer the vegetarian option, this can be arranged as long as school know the day before the meal is ordered.

Letters have already been sent regarding Christmas Dinner and Party Day, if you have any questions about these please contact us.

## Things to Come

Following responses to the parent questionnaire in Summer Term, it is clear that many of you would like an online payment system for dinners and trips. We have started to organise this and will let you know when it is up and ready!

Also, this term, we will be sending out a new survey with regards to our after school care provision as this is something that has been asked about. Please complete this honestly as it will help us to judge interest.

I hope this letter helps you to feel informed and as ever if there is anything you would like to know more about or to tell school about, you can contact class teachers directly – all have their emails on their class pages. Or you can speak to the office, chat to me outside or make an appointment to see me directly.

I hope the new list of dates will help you plan ahead with more dates added for later in the year!

Kind regards

*S Tomlinson*

Mrs Sarah Tomlinson  
Headteacher

# Whitwell Primary School

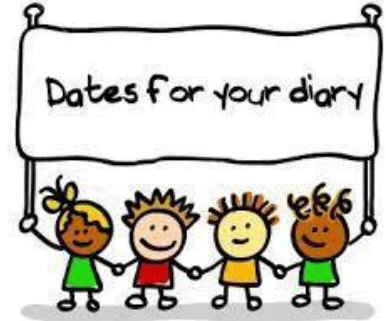
Southfield Lane, Whitwell, nr Worksop. Notts S80 4NR

Tel. 01909 720251  
Fax: 01909 720251  
Email: info@whitwell.derbyshire.sch.uk



Head Teacher: Mrs S Tomlinson  
Deputy Head Teacher: Mr T Stirling

Mon 6 <sup>th</sup> Nov	School Re-opens
Tues 7 <sup>th</sup> Nov	8.45am Accelerated Reader Parent Information Session – hall
13 <sup>th</sup> -17 <sup>th</sup> November	Anti Bullying week
Mon 13 <sup>th</sup> Nov	Individual school photos Odd Socks Day
Fri 17 <sup>th</sup> Nov	BBC Children in Need £1 for spots
Tues 21 <sup>st</sup> Nov	Flu immunisations Y6 Sats Parent Meeting 5pm
Mon 27 <sup>th</sup> Nov – Fri 1 <sup>st</sup> Dec	Book Fair 310pm everyday - hall
Tues 28 <sup>th</sup> Nov	Donations to be brought for Toys-4-Life collection
Fri 1 <sup>st</sup> Dec	Christmas Fair 2pm
Tues 5 <sup>th</sup> Dec	Last Y5 swimming for this term
Thurs 7 <sup>th</sup> Dec	Polar Express Evening for KS1 time 4.30 – 7.00pm
Fri 8 <sup>th</sup> Dec	EYFS Productions for parents – 9.30am and 1.45pm Christmas Jumper Day £1 donation for Save the Children
Tues 12 <sup>th</sup> Dec	KS1 Productions for parents – 9.30am and 1.45pm
Weds 13 <sup>th</sup> Dec	Christmas Dinner - Christmas Jumpers can be worn from now!
Thurs 14 <sup>th</sup> Dec	Christmas coffee Morning for parents in the hall 9 – 10.30am
Tues 19 <sup>th</sup> Dec	Panto visiting school
Weds 20 <sup>th</sup> Dec	Christmas Parties
Thurs 21 <sup>st</sup> Dec	Last day of term for children
Fri 22 <sup>nd</sup> Dec	INSET



## Dates for 2024

Mon 8 <sup>th</sup> Jan	School re-opens for Spring Term Young Voices Concert
Tues 16 <sup>th</sup> Jan	Swimming restarts



**BEST**  
Believe, Endeavour, Succeed Together!

Weds 14th – Fri 16th Feb	Y4/5 Residential to Mount Cook
Fri 16th Feb	End of Term
Mon 26th Feb	Back to School
Mon 18 <sup>th</sup> Mar	Parent Consultations – Mrs Anderson, Mrs Watts & Mrs Plaister
Tues 19 <sup>th</sup> Mar	Parent Consultations – Miss Morris, Miss Sleight, Miss White
Weds 20 <sup>th</sup> Mar	Parent Consultations – Miss Brown, Mr Moore
Thurs 21 <sup>st</sup> Mar	Parent Consultations – Miss Webster, Mrs Draycott & Mrs Williams
Thurs 28th Mar	End of Spring Term
Mon 15th Apr	Back to School
Tues 23rd Apr	Swimming restarts
Week starting 13th May	Y6 SATS
Tues 14th May	Y2 and Y6 Fire Safety talk
Thurs 23rd May	Last day of term for children
Fri 24th May	INSET
Mon 3rd June	Back to School
Mon 3rd – Fri 7th	Y6 Residential to the Isle of Wight
Week starting 3rd Jun	Y4 Multiplication Check
Week starting 10th Jun	Y1 Phonics Screening Check
Wed 26 <sup>th</sup> June	Sports Day
Thurs 27 <sup>th</sup> June	Sports Day (Reserve)
Tues 2 <sup>nd</sup> July	EYFS Sports Day
Wed 3 <sup>rd</sup> July	EYFS Sports Day (Reserve)
Mon 8 <sup>th</sup> July	Y5/6 Production for Parents 145pm and 6pm
Weds 10 <sup>th</sup> July	Y6 Leavers Assembly
Fri 12 <sup>th</sup> July	Y6 last day at Whitwell Primary School (Heritage Students)
Mon 15 <sup>th</sup> – Tues 22 <sup>nd</sup>	Y6 attend Heritage High School
Weds 17 <sup>th</sup> – Fri 19 <sup>th</sup>	School Transition Days
Tues 22 <sup>nd</sup> July	End of Year